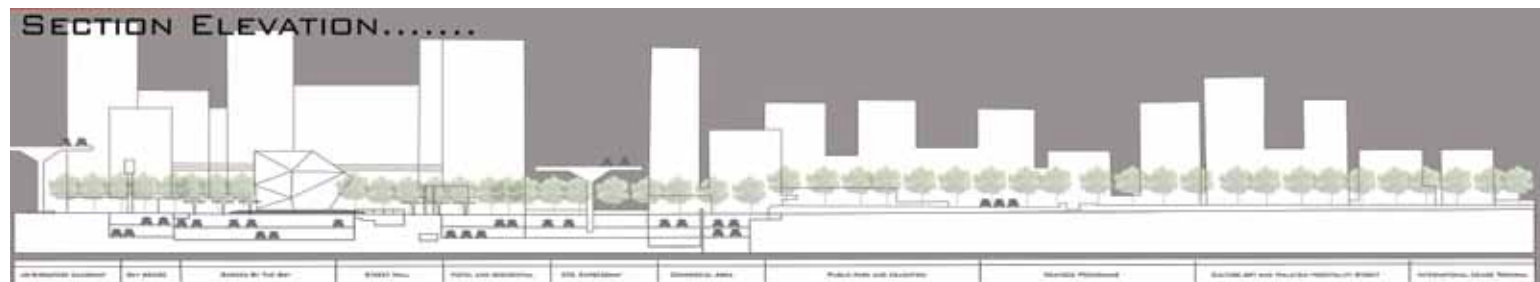


Walking through Opulence

Abd Aziz Othman, Mohd Johari Mohd Yusof, Norsidah Ujang & Kamariah Dola

It is a series of green spaces – designed for the community and environmental needs with distinctive character of spaces. They offer a wide range of activities capturing the spirit of these places. The emphasis is on the significant visual and physical linkages. A system of pedestrian walkway is introduced from the residential areas to the city's business centre. The corridor varies from the conventional to the ecological approaches in terms of the site context to provide an extraordinary walking experience. Promenades and elevated walkways create strong sense of identity as a modern and innovative experience for Johor Bahru city.



■ Mohd Amirul Hussain



:3500



DAY BRIDGE VOYAGE TO EXPERIENCE AND FEEL



RAIN BARDEN TO ENJOY THE VIEW ALONG THE SEA



THE LIVING CINEMA TO REPRESENT THE ROMANTIC & FANTASY



RAIN BARDEN TO ENJOY THE VIEW ALONG THE SEA



THE LIVING CINEMA TO REPRESENT THE ROMANTIC & FANTASY



THE LIVING CINEMA TO REPRESENT THE ROMANTIC & FANTASY

AT
SKI

ON EX

