

## **Urban Morphology**

*Sustainable Tropical Environmental Design Exhibition 2011*

<http://www.vlmp.upm.edu.my>

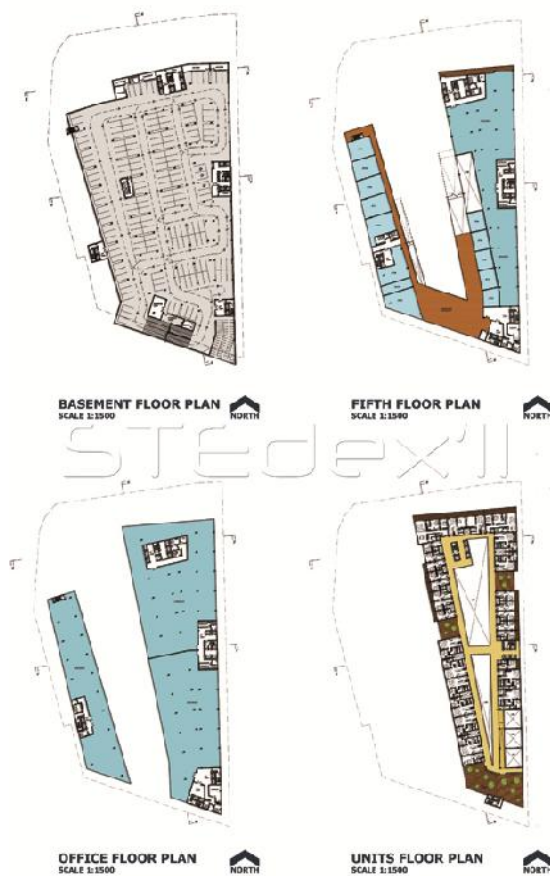


STEdex'11 – Meor Mohammad Fared, Mohammad Yazah Mat Raschid, Teh Min Shen, **Urban Morphology**, *Sustainable Tropical Environmental Design Exhibition 2011*, ISSN : 2180-0685, Vol : 3, [60-61], Faculty of Design and Architecture, Universiti Putra Malaysia

A typical skyscraper seldom has the same qualities of human scale development in terms of social interaction that happens along the streets and the open spaces as offered in the sprawling urban development. The solution is to create a skyscraper that attempts to integrate the street life of Kuala Lumpur in a vertical configuration. Teh Min Shin proposes that entire fragmented volume of building to be interconnected with a spatial circulation ribbon that begins at street level moving upwards to create community areas, restaurants, auditoriums, parks and cultural spaces. This approach challenges the common perception of a skyscraper which does not place any value on the street life and the sustainable well-being of an urban population.



Urban Morphology\_1

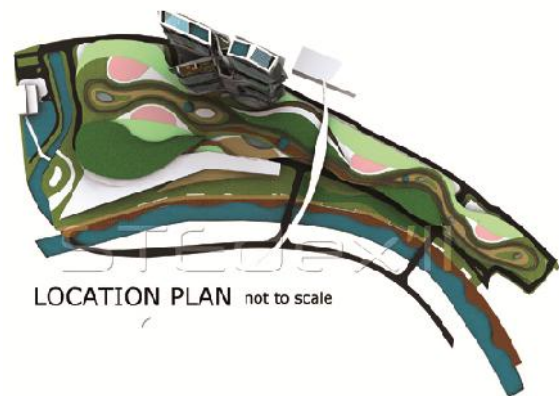


Urban Morphology\_2



Urban Morphology\_5

Urban Morphology\_4



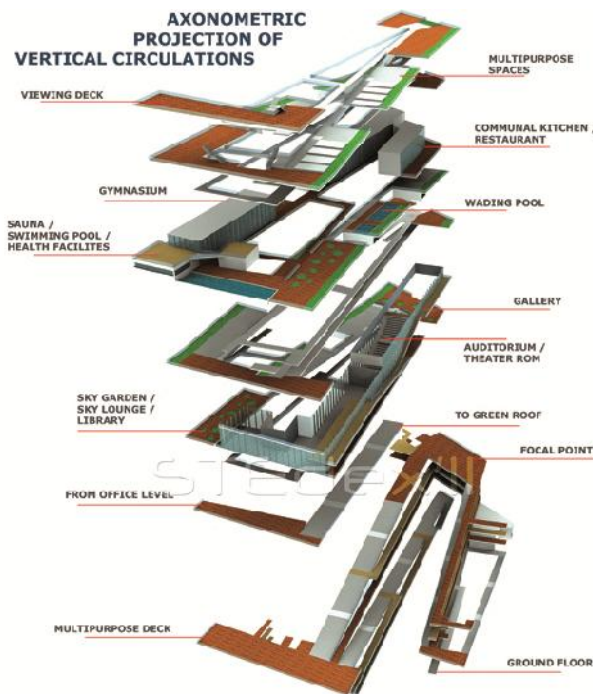
Urban Morphology\_6



Urban Morphology\_7



Urban Morphology\_8



Urban Morphology\_9

- Teh Min Shen