

Lifelong Learning Building

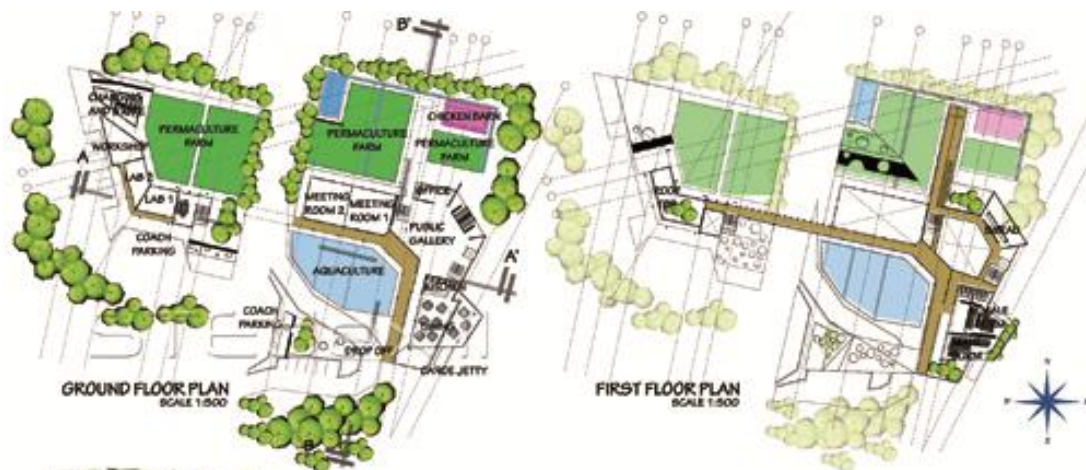
Sustainable Tropical Environmental Design Exhibition 2011

<http://www.vlmp.upm.edu.my>



STEdex'11 – Mohamad Fakri Zaky Ja'afar, Meor Mohammed Fared, Norhasni Ahmad, **Lifelong Learning Building, Sustainable Tropical Environmental Design Exhibition 2011**, ISSN : 2180-0685, Vol : 3, [62-63], Faculty of Design and Architecture, Universiti Putra Malaysia

The environment and social aspects are important design considerations, yet both are always neglected as part of the design strategies to achieve sustainable design goal. The design of 'permaculture' should be based on the biological and ecological pattern that not only maximizes the environmental impact but also generates continuous knowledge to the users through its spatial experience and activities provided. Norhasni Ahmad addresses the issue by incorporating passive design strategies through the appropriate building orientation and series of courtyards to minimize the heat and maximize natural ventilation. Further integration of active energy saving photovoltaic panels, recycle and waste management strategies also prolong the continuous environmental and social education to the users through the activities provided in the courtyard spaces. The proposal opens a new pathway on understanding how a built environment can instigate sustainable lifelong learning.



Lifelong Learning Building_1



Lifelong Learning Building_2



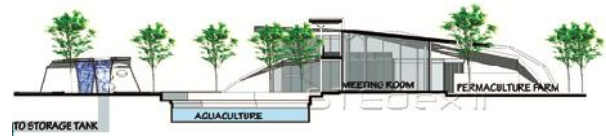
Lifelong Learning Building_3



Lifelong Learning Building_4



Lifelong Learning Building_5



Lifelong Learning Building_6



Lifelong Learning Building_7



Lifelong Learning Building_8



Lifelong Learning Building_9



Lifelong Learning Building_10



Lifelong Learning Building_11

- Norhasni Ahmad