

Sustainable Siting Strategies

Sustainable Tropical Environmental Design Exhibition 2011

<http://www.vlmp.upm.edu.my>



STEdex'11 – Sumarni Ismail, Maszura Abdul Ghafar, Nur Dalilah Dahlan, Nasir Baharuddin, Hasmira Yahaya, ***Sustainable Siting Strategies, Sustainable Tropical Environmental Design Exhibition 2011***, ISSN : 2180-0685, Vol : 3, [32-33], Faculty of Design and Architecture, Universiti Putra Malaysia

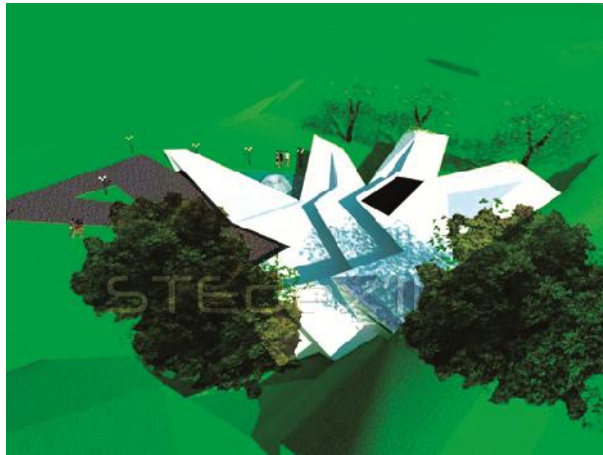
The design of the gallery located in a hilly site should ensure minimal encroachment to the site landscape by minimizing land cutting and filling. The gallery should be integrated with the landscape which result in the creation of form and would then merge within the natural curve and slope to be considered as a sustainable building. Hasmira adopted adventure genre that is manifested in the spatial exploration journey of the building internal ramps reinforcing the idea of conquering a dynamic hilly landscape. Elevated views from the different floors and staged roof are vital as lookout to the surroundings. The project demonstrates the importance of embracing site and maximizing the view through appropriate building orientation to get the true value of a sustainable design.



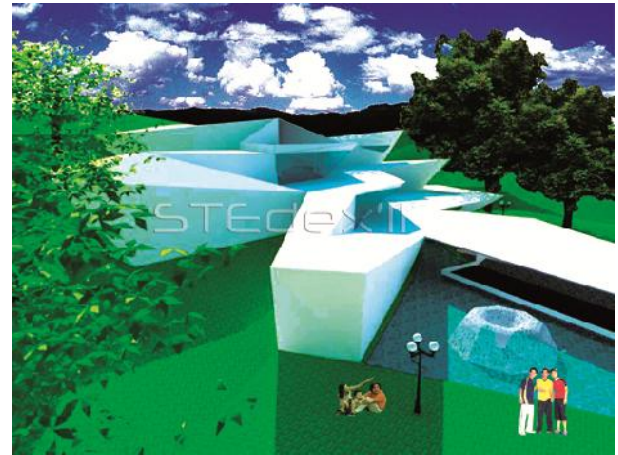
Sustainable Siting Strategies_1



Sustainable Siting Strategies_2



Sustainable Siting Strategies_3



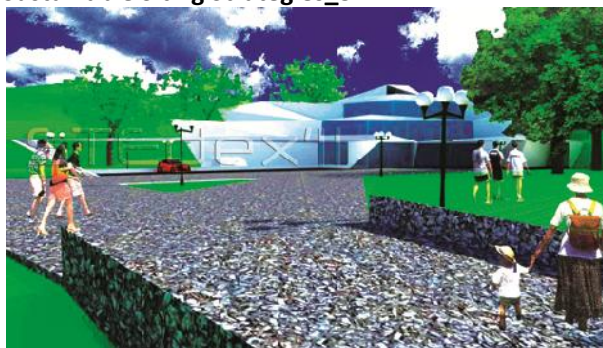
Sustainable Siting Strategies_4



Sustainable Siting Strategies_5



Sustainable Siting Strategies_6



Sustainable Siting Strategies_7

- Hasmira Yahaya