

## Visuospatially Of Destruction

Sustainable Tropical Environmental Design Exhibition 2011

<http://www.vlmp.upm.edu.my>

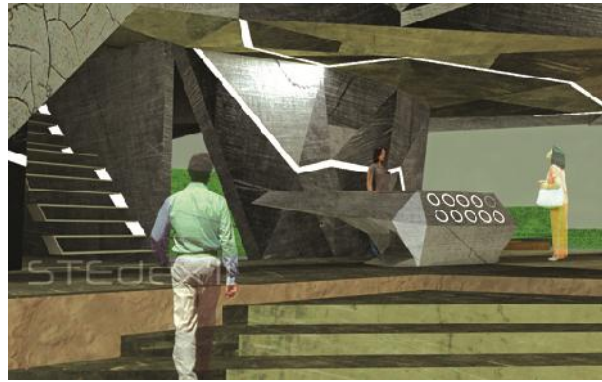


STEdex'11 – Nur Dalilah Dahlan, Sumarni Ismail, Maszura Abdul Ghafar, Nasir Baharuddin, Mohammad Hafizal Abdul Kadir, ***Visuospatially Of Destruction, Sustainable Tropical Environmental Design Exhibition 2011***, ISSN : 2180-0685, Vol : 3, [34-35], Faculty of Design and Architecture, Universiti Putra Malaysia

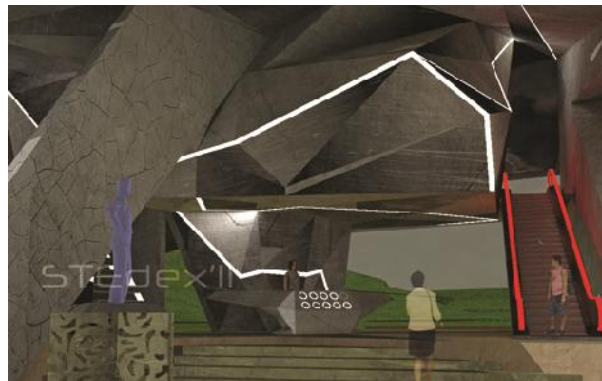
A tectonic architectural form can reflect a natural area of disaster that is achieved through the visual and spatial design. The intention is to go beyond 'fictional realism of natural disaster' as visualized in the films and contextualizing the voluptuous imagery of form and content as a 'shared language' between the popular culture of film, public taste and architecture. Mohammad Hafizal's Film Gallery project manipulates irregular walls and overhead finishes portraying the sense of building instability. The tectonic strategy of the Film Gallery in evoking the sense of aftermath continues in the formation of its building topology; where the hard scape is covered with coarsely cut key stones surrounding the brutal bare concrete structure. The project is a very successful attempt of integrating landscape and built environment to create a fictionalized building.



Visuospatially Of Destruction\_1



**Visuospatially Of Destruction\_2**



**Visuospatially Of Destruction\_3**



**Visuospatially Of Destruction\_4**

- **Mohammad Hafizal Abdul Kadir**