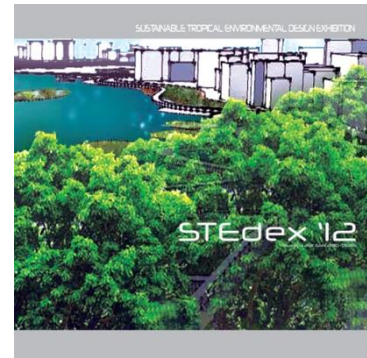


Expedition Tower

Sustainable Tropical Environmental Design Exhibition 2012

<http://www.vlmp.upm.edu.my>



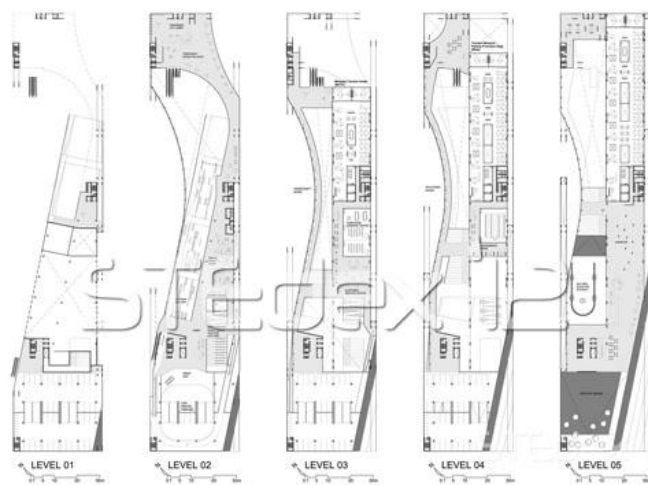
STEdex'12 - Azizah Salim Syed Salim, Tan Khan Kung, ***Expedition Tower, Sustainable Tropical Environmental Design Exhibition 2012***, ISSN : 2180-0685, Vol : 4, [200-201], Faculty of Design and Architecture, Universiti Putra Malaysia

Under the East Coast Economy Region (ECER) scheme, Kuantan has been selected to become the capital city of the eastern part of the peninsular. Since Malaysia is all out to boost her economy in the tourism industry, Kuantan has the opportunity to develop the urban tourism sustainably taking into account the waterfront and her rich heritage. The scope of the proposed Kuantan Tower is to promote tourism related activities organised by the Ministry as well as state run activities through tourist information counters, websites, printed materials and electronic board. The tourist hub will manage programmes including cultural and tourism related events through shows, exhibitions, briefings and demonstrations to attract local and international tourists. The concept of combining Kuantan Tower together with the tourism hub is to provide a one stop centre for tourists to gather or collect information and at the same time experience the aerial views of Kuantan city from the top of the tower.

The Expedition Tower designed by Tan Khan Kung which is located within the civic zone, comprises of a gallery, expedition tower and sculpture park. This will boost up the adjacent plots and improve the connectivity around the tower as a node and landmark for the city. The tower is designed as such to create an urban playground for tourists and local residents where features such as slanting 'ferris wheel', escalator, sky walk, observation deck will provide a unique and memorable experience while staying and exploring in Kuantan.



Expedition Tower_1



Expedition Tower_2



Expedition Tower_3

Tan Khan Kung