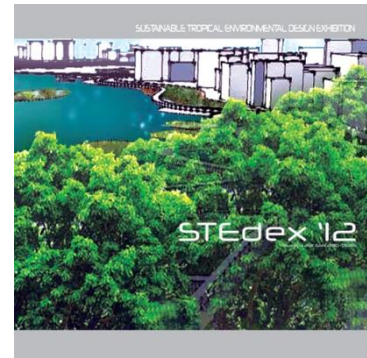


## Capturing Continuity in Public Affiliation

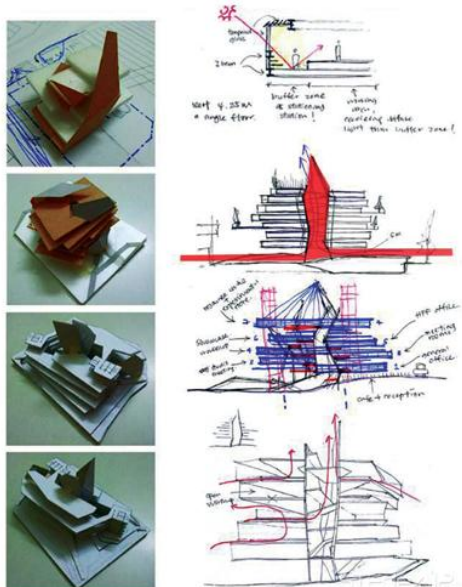
Sustainable Tropical Environmental Design Exhibition 2012

<http://www.vlmp.upm.edu.my>



STEdex'12 – Ida Suriana Ismail, Zamri Ismail, Choy Yu Zhen, Chen Mei Sien, ***Capturing Continuity in Public Affiliation***, *Sustainable Tropical Environmental Design Exhibition 2012*, ISSN : 2180-0685, Vol : 4, [192-193], Faculty of Design and Architecture, Universiti Putra Malaysia

When designing on a site with existing public or pedestrian course, it is good to take advantage of bringing the streams of people into the site whilst sustaining the existing flow, especially in the context of Habitat for Humanity Regional Office Building. Choy Yu Zhen and Chen Mei Sien apply different approaches to draw the public into their sites. Choy uses visual impact and makes a dramatic change to the external treatment of the building to capture attention. This is achieved by having the exhibition space designed as a cantilevered and extruding form, which protrudes towards the road, as if 'calling' for public attention. Chen, however, benefits from the existing natural human flow from the main three points of pedestrian accesses through the site. This gradual flow remains almost unnoticed until the pedestrian catches a glimpse of the building. What both schemes have in common is that they open the building for public use, bringing the public into the centre of the site by creating an attractive activity space. It also permits the free flow of pedestrian traffic across the site; thus, achieving continuous public affiliation.



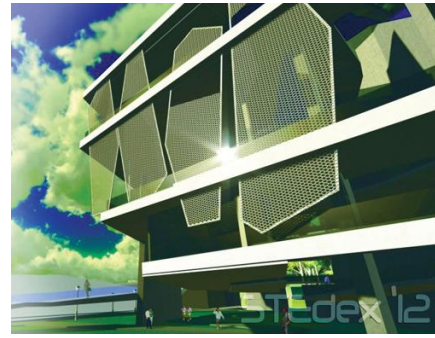
Capturing Continuity in Public Affiliation\_1



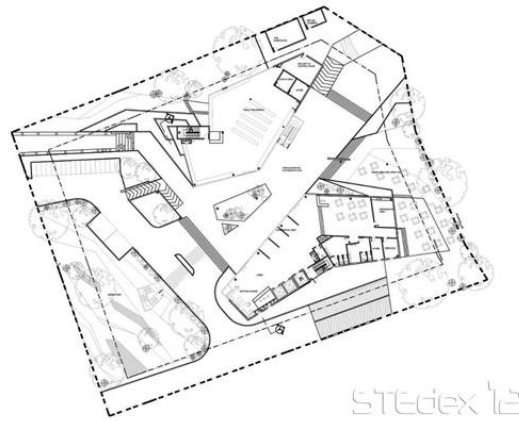
Capturing Continuity in Public Affiliation\_2



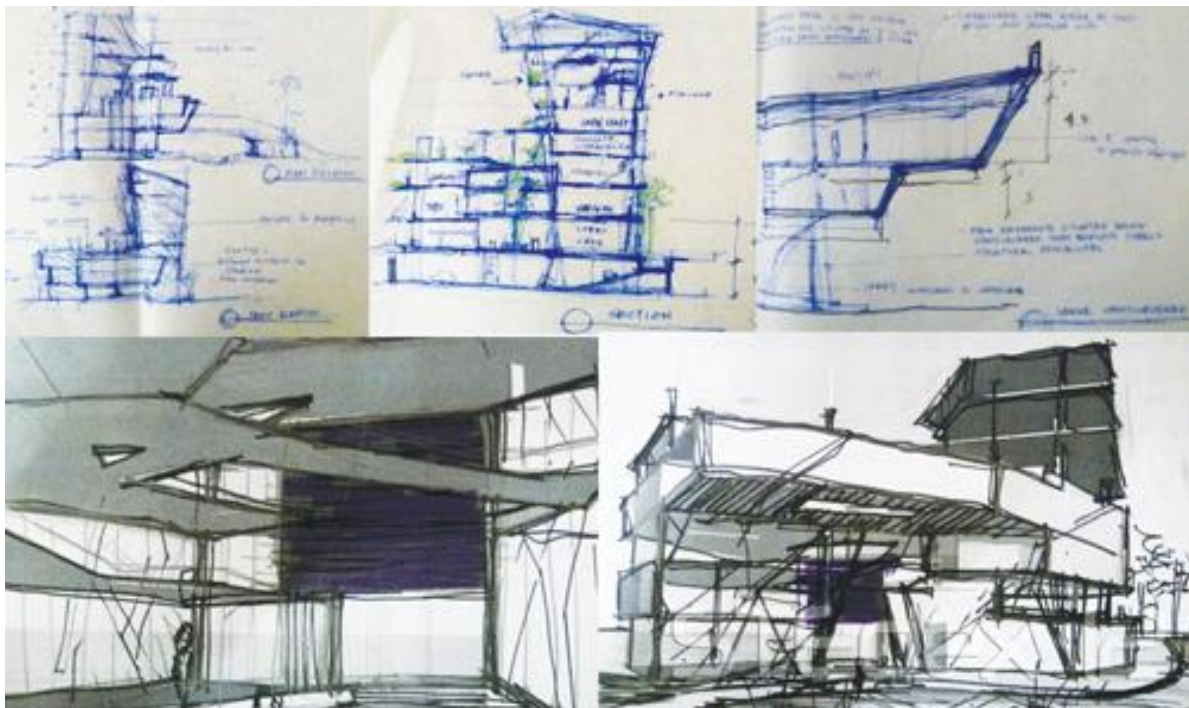
**Capturing Continuity in Public Affiliation\_3**



**Capturing Continuity in Public Affiliation\_4**



**Capturing Continuity in Public Affiliation\_5**



**Capturing Continuity in Public Affiliation\_6**

**Choy Yu Zhen, Chen Mei Sien**