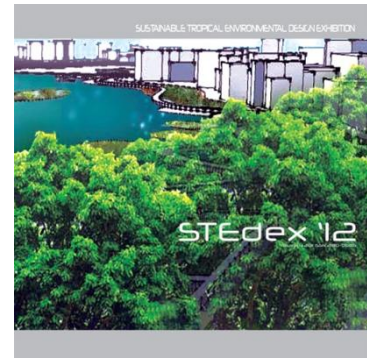


Selflessness Beyond Boundries

Sustainable Tropical Environmental Design Exhibition 2012

<http://www.vlmp.upm.edu.my>



STEdex'12 – Wan Srihani Wan Mohamed, Zamri Ismail, Chuah Xin Yin, ***Selflessness Beyond Boundrie, Sustainable Tropical Environmental Design Exhibition 2012***, ISSN : 2180-0685, Vol : 4, [188-189], Faculty of Design and Architecture, Universiti Putra Malaysia

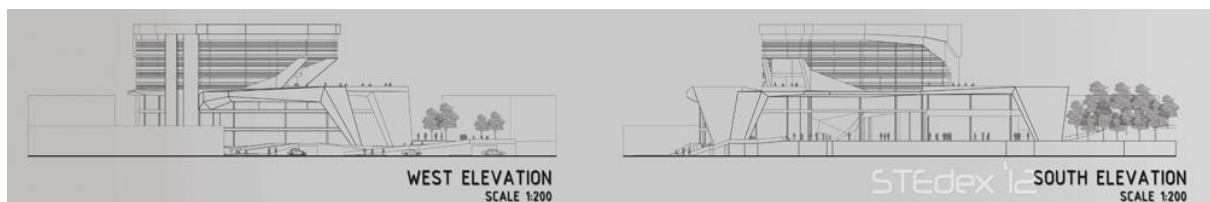
Relating “selflessness” and housing for the needy has helped Xin Yin to exploit the Kuching site into a massive tangential links between forms and public open spaces resulting in a boundary-less architecture. It accentuates the movements of pedestrians across the site, making the open plaza a public park ingeniously built for visual connectivity to the triple volume lobby. The spaces and voids juxtaposed by diagonal lines generates excellent natural ventilation throughout the building. The designer’s intention to charm the public into her space is effective as there is nothing to hinder their paths. This project has steel structure as its main supporting members and constructed with lightweight concrete for better thermal insulation; hence, reducing the energy consumed for air conditioning. Such raw materials are applied to display a sense of honesty and humility even for an imposing form in the middle of Kuching City. The design theme, “selflessness”, drives the proposal for the regional office to use both materials and metaphor.



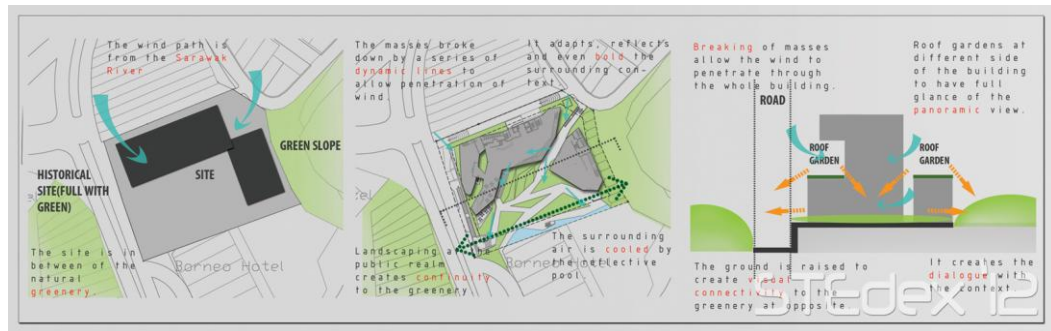
Selflessness Beyond Boundries_1



Selflessness Beyond Boundries_2



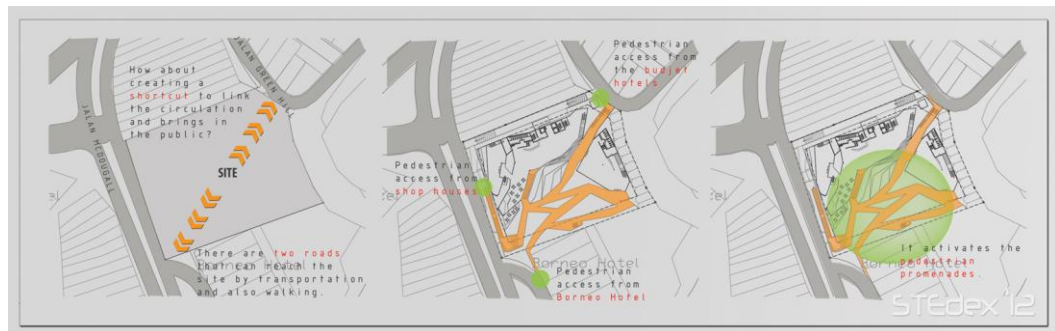
Selflessness Beyond Boundries_3



Selflessness Beyond Boundries_4



Selflessness Beyond Boundries_5



Selflessness Beyond Boundries_6



Selflessness Beyond Boundries_7

Chuah Xin Yin