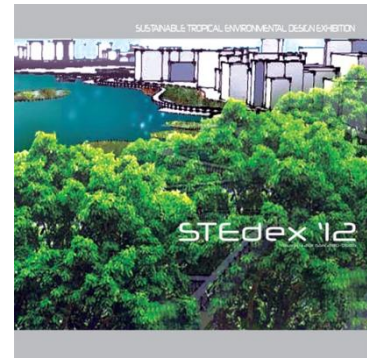


The Rhapsody of Bamboo

Sustainable Tropical Environmental Design Exhibition 2012

<http://www.vlmp.upm.edu.my>



STEdex'12 – Norsidah Ujang, Mohd Shah Irani Hasni, ***The Rhapsody of Bamboo, Sustainable Tropical Environmental Design Exhibition 2012***, ISSN : 2180-0685, Vol : 4, [28-29], Faculty of Design and Architecture, Universiti Putra Malaysia

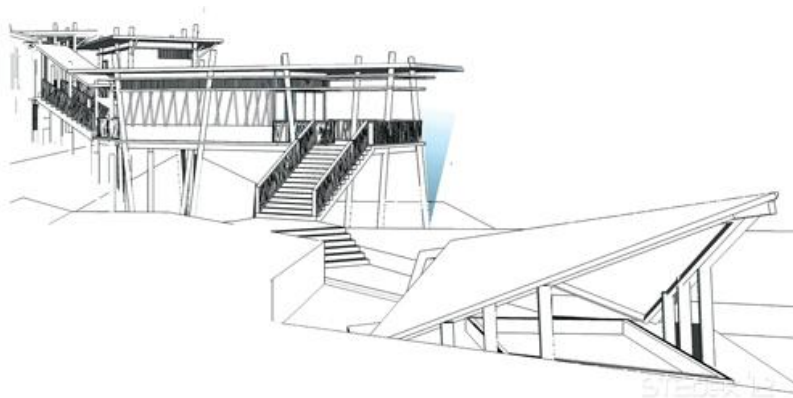
The unique beauty and biodiversity of the Bukit Nanas Forest Reserve in the centre of Kuala Lumpur has inspired the design of the retreat house. The presence of bamboo in the area evokes the idea of building with nature by exploring the vernacular's ecological and climatic capabilities in design. In contrast with the surrounding urban context, the house fulfils the need for privacy through a distinct union between functional spaces and nature. Growing out from the natural setting, a simple display of lightness, verticality, layering of spaces and repetition of architectural elements creates a harmonious setting. It allows for maximum natural view, sunlight and ventilation. The house renders an expansive view of a bamboo forest and continuous decking as an extension of interior space visually distinctive through the changing in plane and floor level. The natural interior is concealed by a cubic façade, with the use of bamboo, glass and timber as building materials. Existing in the continuous presence of nature; the house is a home that is designed for flexibility, adaptability and spirituality.



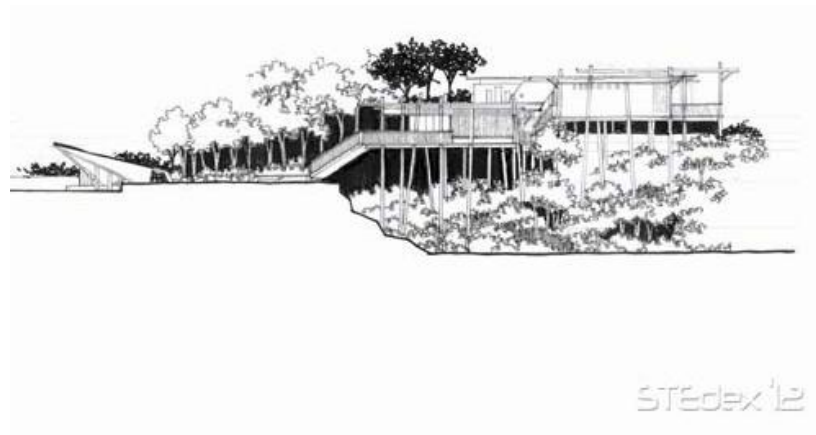
The Rhapsody of Bamboo_1



The Rhapsody of Bamboo_2



The Rhapsody of Bamboo_3



The Rhapsody of Bamboo_4

Mohd Shah Irani Hasni