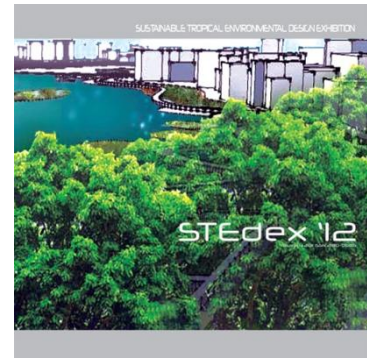


Form, Light and Illusion

Sustainable Tropical Environmental Design Exhibition 2012

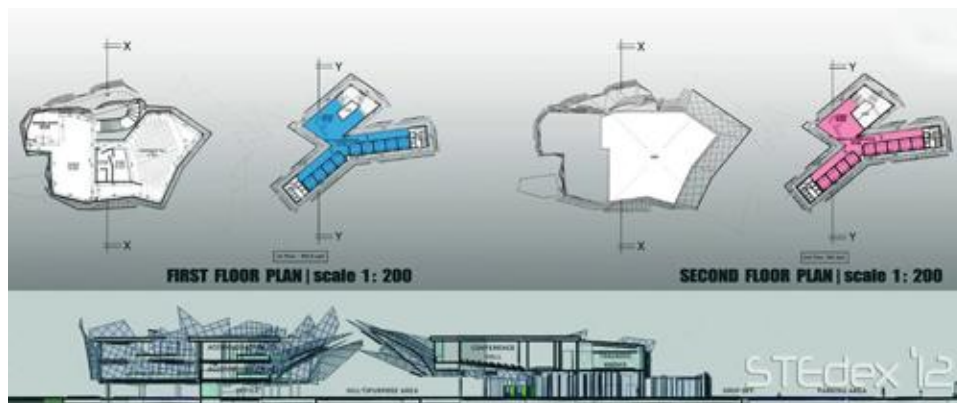
<http://www.vlmp.upm.edu.my>



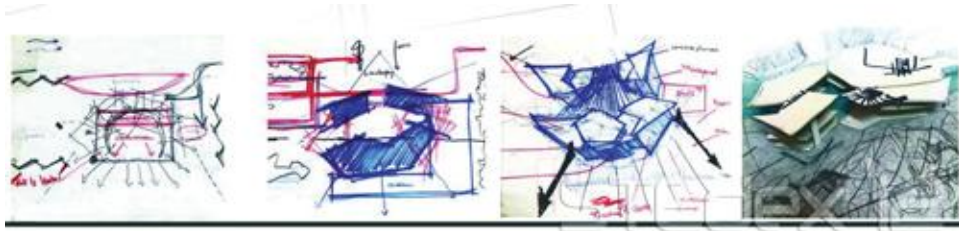
STEdex'12 – Ida Suriana Ismail, Clement Cheam Heng Kit, ***Form, Light and Illusion, Sustainable Tropical Environmental Design Exhibition 2012***, ISSN : 2180-0685, Vol : 4, [174-175], Faculty of Design and Architecture, Universiti Putra Malaysia

The play of form with appropriate lighting will create illusions to what one's eyes can explore and experience. It can generate a detached observation or a direct immersion of how one sees a building. Integration of these illusions with the surrounding environment is seen in Clement's work in ABIM Outreach Youth Leadership Training Centre project. Clement had confronted this idea which began with an observation of paddy fields around the site. He visualized the play of light and shades, evidently visible between the paddy stems and translated his thoughts from those simple lines and streaks of light to solids and voids of physical forms and spaces.

The proposed building consists of overlaying and overlapping screens expanded as walls for the building, allowing light to penetrate through the walls. This sets dramatic light patterns which shower the interior spaces, apart from permitting natural ventilation and capturing glimpses of serene waterscapes. The project opens up a new way in exploring form, light and illusion. It embodies and appreciates the notion of considering what pattern exists in the surrounding environment, and implementing such patterning approach to create a dynamic versus static composition of images to one's eyes.



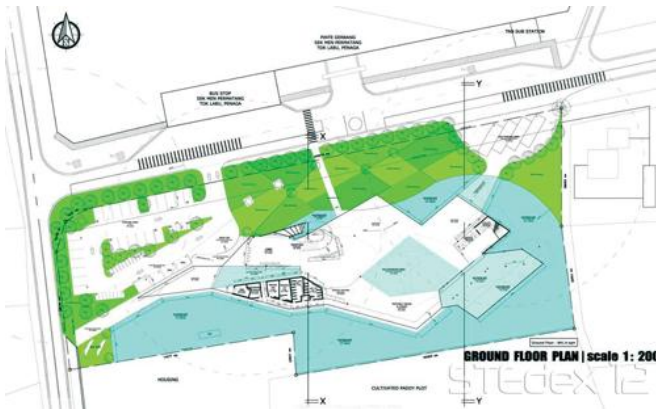
Form, Light and Illusion_1



Form, Light and Illusion_2



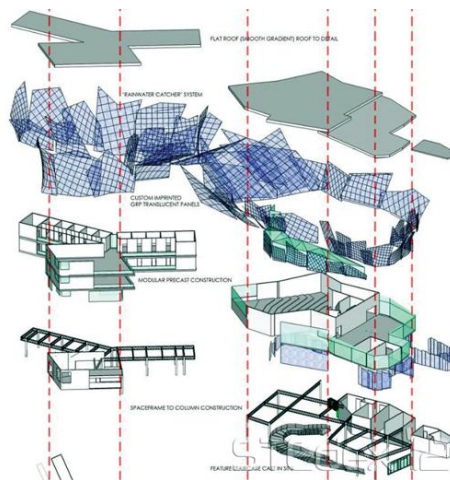
Form, Light and Illusion_3



Form, Light and Illusion_4



Form, Light and Illusion_5



Form, Light and Illusion_6

Clement Cheam Heng Kit