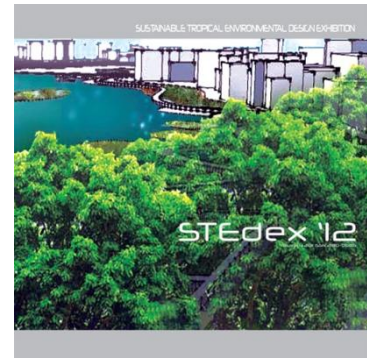


Exposition

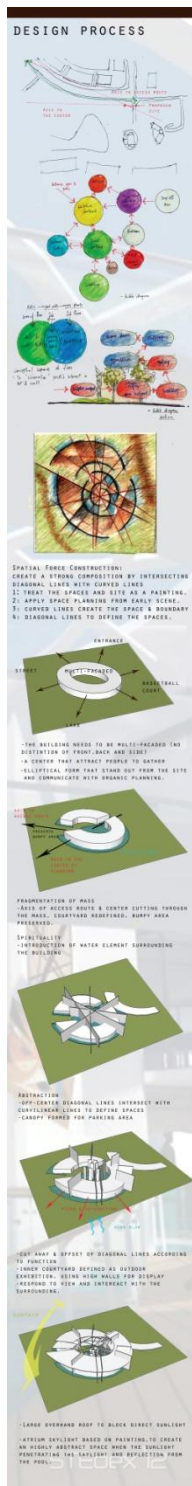
Sustainable Tropical Environmental Design Exhibition 2012

<http://www.vlmp.upm.edu.my>



STEdex'12 – Meor Mohammad Fared, Ngu Xian Dung, ***Exposition, Sustainable Tropical Environmental Design Exhibition 2012***, ISSN : 2180-0685, Vol : 4, [164-165], Faculty of Design and Architecture, Universiti Putra Malaysia

Set on the edge of Kota Kemuning Lake Side Park, the proposed Recreational and Creative Centre tries to integrate the creative endeavours and physical aspects of recreational activities. Xian Dung posited that youth nowadays have less interest in arts and crafts and are more interested in other fields. By infusing the arts and crafts spaces with the recreational activities the youths who frequent the centre might be influenced and be inspired with the creative activities. Xian Dung applied the Gustav Freytag's dramatic structure of the five acts– exposition, rising action, climax, falling action and resolution. Spaces in the Recreational and Creative Centre are arranged in a narrative sequence in order to heighten the visitors' experiences. The lobby and outer courtyard represent the exposition, which entice visitors to the centre. Rising action is represented by indoor courtyard which also serves as an outdoor exhibition area. The workshop and gallery which reveal the creative nature of the centre represent the climax, falling action and resolution part of the scheme. The form took inspiration from geometric abstract paintings of the dynamic juxtaposition between curvilinear and diagonal lines. The spaces are arranged in a graceful curve wrapping around an indoor courtyard which serves as the focal point of the centre. Three main entrances lead visitors to the indoor courtyard -from the drop-off area, from the Lake Side Park and from the basketball court. The strong diagonal planes define the boundaries of the various spaces and act as anchors to the hovering curvilinear planes.



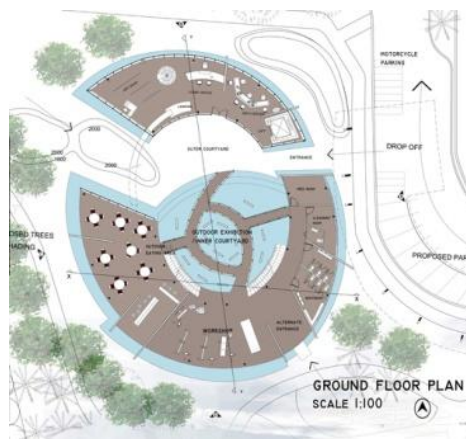
exposition_3



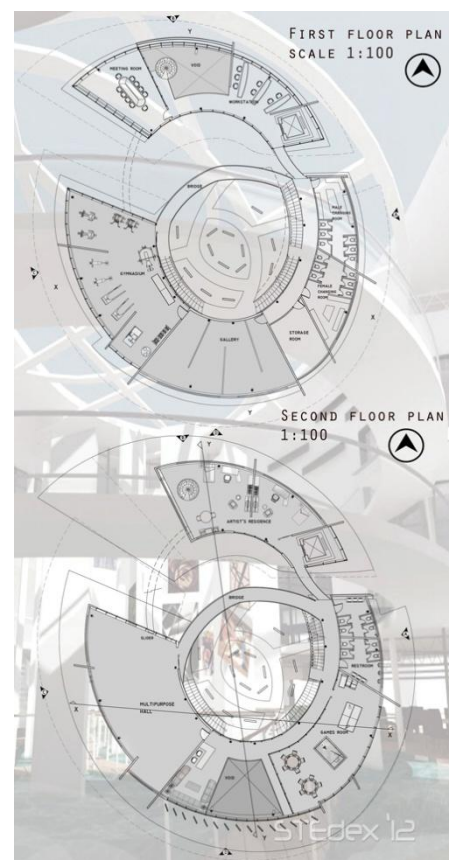
exposition_1



exposition_2



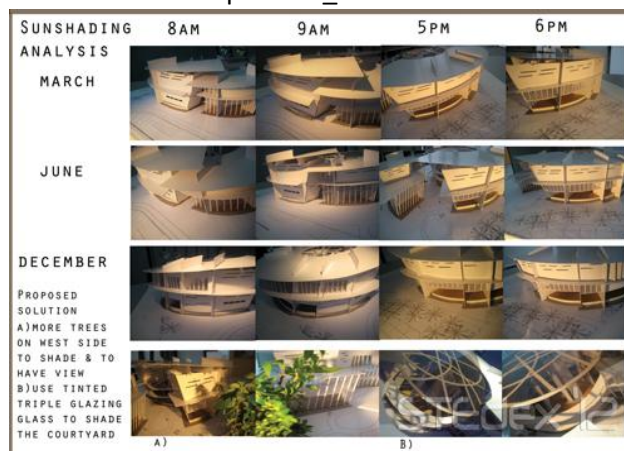
exposition_4



exposition_5



exposition_6



exposition_7



exposition_8