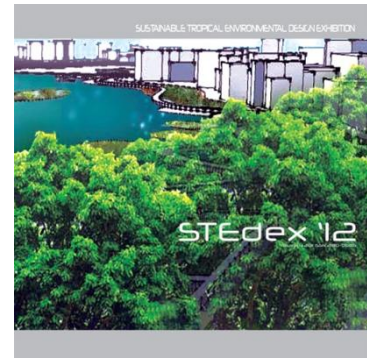


Pulsing Soul

Sustainable Tropical Environmental Design Exhibition 2012

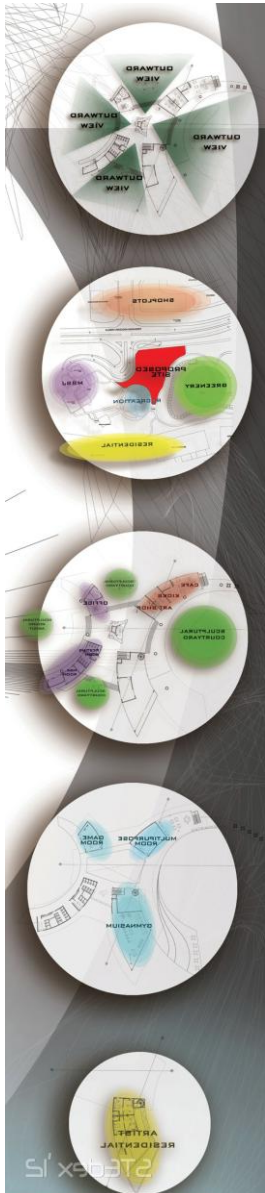
<http://www.vlmp.upm.edu.my>



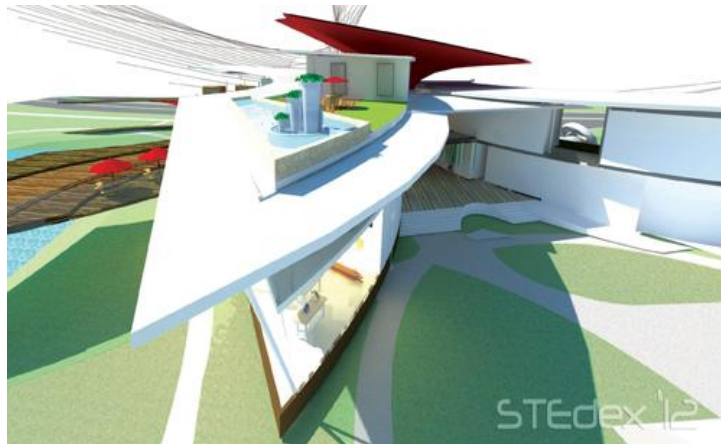
STEdex'12 – Zalina Shari, Esther Wong Shan Ya, ***Pulsing Soul***, ***Sustainable Tropical Environmental Design Exhibition 2012***, ISSN : 2180-0685, Vol : 4, [160-161], Faculty of Design and Architecture, Universiti Putra Malaysia

This exciting project was conceived as a contemporary, volumetric version of a stroll garden. Fluid, rhythmic and sculptural are among the words that can describe Esther's planning layout, forms and interior design. Hence, the scheme confronts conformity and diversity. In response to conformity, it complements well with the natural features on the site, particularly the water body. The scheme also appears to be in contrast to the surrounding developments creating distinctive identity in the master plan. The diversity of both sites and of her proposed complex is also evident as Esther decided early on to conceive her complex as a group of buildings rather than a single building. The result is a complex made of four spatial components formed in a manner that appears to be exploded into four directions allowing the central lobby space to be visually and physically connected to all four sides. At the same time, she resolved the site demands for continuity, connection, entry and pedestrian movement. There is no frontality and no single point of visual comprehension in the scheme. Rather, as one moves through the complex, one comes to appreciate it as multidimensional-diverse and open-ended. This is unsurprising as the design adheres to the concept of 'pulseheart-soul'. For example, 'pulse' is denoted the connections between spaces; 'heart' is represented by the central grand lobby which allows outward views to all sides; and 'soul' is symbolized by the sweeping and projecting sky bridges that accentuate the scheme. These articulated interventions such as the sky bridges, exploit the water's edge and create a rich variety of spaces on three levels.

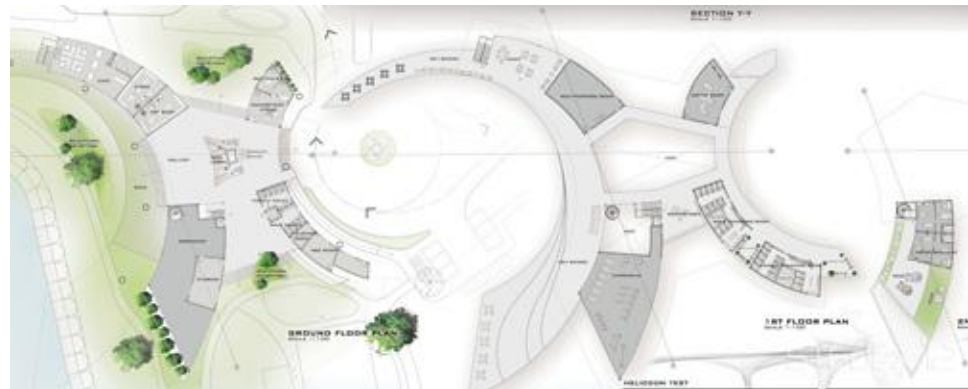
The whole complex is served by umbrella-like structures that either support the sky bridges or simply act as a freestanding one. Although the buildability and durability of the latter might be questionable, it helps to shade spaces underneath, enhances the bold sculptural quality of the form, and balances the overall threedimensional composition. As Ove Arup once said: "What the engineer sees as a structure, the architect sees as a sculpture. Actually, of course, it is both".



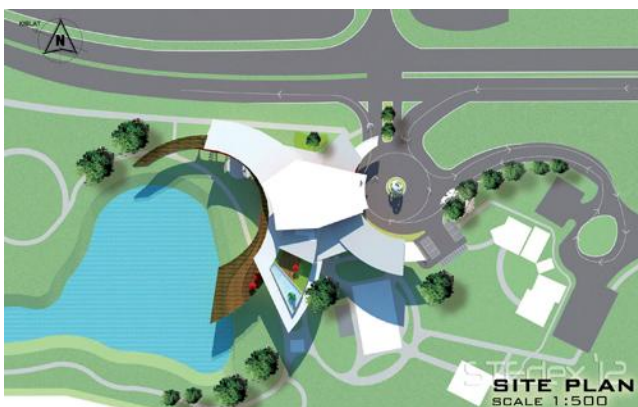
Pulsing Soul_1



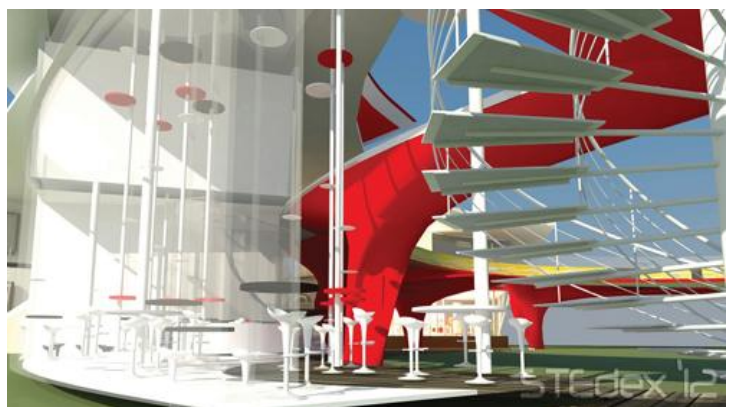
Pulsing Soul_2



Pulsing Soul_3



Pulsing Soul_4



Pulsing Soul_5

Esther Wong Shan Ya