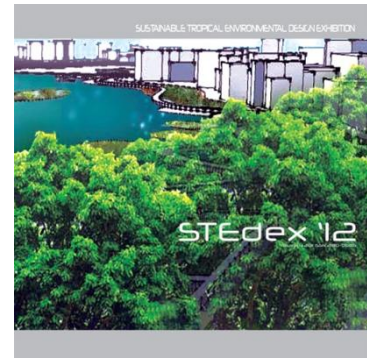


Zealous

Sustainable Tropical Environmental Design Exhibition 2012

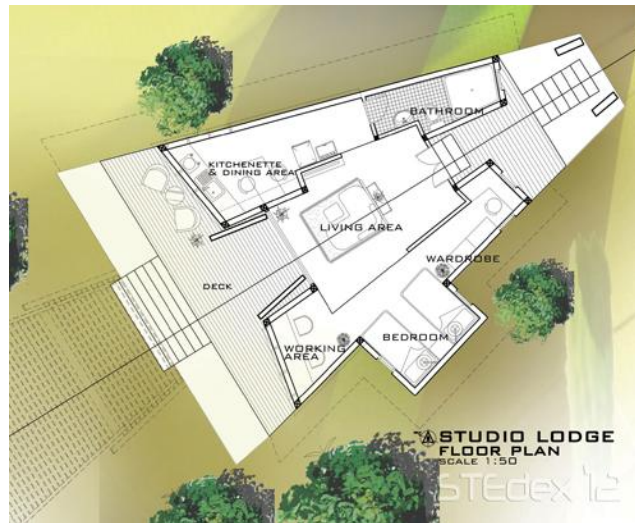
<http://www.vlmp.upm.edu.my>



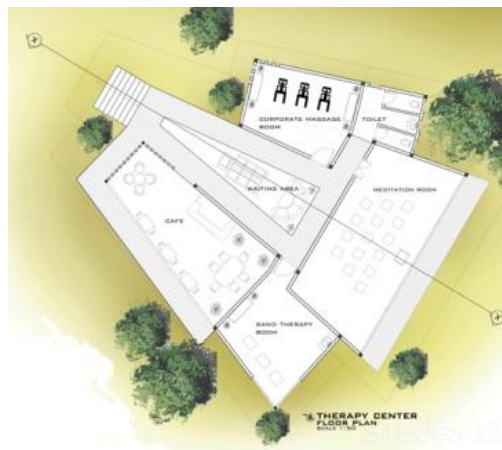
STEdex'12 – Zalina Shari, Esther Wong Shan Ya, ***Zealous, Sustainable Tropical Environmental Design Exhibition 2012***, ISSN : 2180-0685, Vol : 4, [152-153], Faculty of Design and Architecture, Universiti Putra Malaysia

In order to generate and maintain the ambiance of a resort, Esther created an exciting tropical atmosphere using a blend of large scale landscape, a lush courtyard, and structures arranged in an axial composition. Due to the staggered composition, an attractive perspective view of the lodge units is offered for guests as they enter the site. Esther's design also eliminates potentially dismal perspectives from all lodge units by creating views to the central sculptural courtyard (inward looking) and to more expansive views across MARDI green fields (outward looking). The lodge units sit on a plateau evoking a processional route celebrating a transformation of sensuality accentuated by the heat and the humidity. However, the therapy centre is placed perpendicular to the overall scheme, creating an anomaly in the site planning.

Overall, the building structures seem to integrate seamlessly with the landscaped areas, expressing zealous and a sense of unity and harmony. Strong geometry is evident both in the plans and threedimensional forms. In fact, the design concept for the lodge units and therapy centre is driven by the open plan concept, thus, creating a sense of spaciousness. The proposed structures create beautiful geometric spaces allowing light and air to enter from all sides as well as providing visual penetration through building to the sky, trees and beyond. Her scheme clearly shows that the tropical feeling can be achieved without the existence of traditional high pitched roofs. Instead, mono-pitched and angled roof planes are proposed to the raised timber structures giving a contemporary look as well as expressing pavilions rather than large masses. The wide eaves and louvered roofs allow the windows to remain open during the monsoon and shield it against the western glare of the tropical sky. By using timber, metal and glass as the basic materials, Esther emphasized on a clear expression of construction, and an attention to the detailing of different building materials.



Zealous_1



Zealous_2



Zealous_3



Zealous_4

Esther Wong Shan Ya